

#B6A-7620530-PR 1955-56 Crown Victoria, 2 dr hardtop, convertible door seal Installation

NOTE: It is necessary to use a weather stripping adhesive to install door seals. Dennis Carpenter recommends and sells 3M brand Weather Stripping Adhesive. Our part # is COAZ-19554-A



- Experience shows us that taping the door seal into position before any adhesive is applied allows you to check the fit of the seal and also aides in applying the seal.
- Apply the adhesive to the door, not the seal. Glue around the door as described in the instructions.
- The best and cleanest results comes from adhering a short section of door seal at a time by removing the securing tape, applying the adhesive and positioning the seal, reapplying the tape then continuing.
- After the adhesive has cured the securing tape can be removed.
- Realize the new door seals are more resilient to compression and will cause your doors to close tightly.

TO INSTALL DOOR SEALS

(Instructions describe passenger door seal installation)

1. Remove the old door seals and residue from the doors. Clean the doors where the seals are to be adhered with a degreaser/ wax remover solution.

2 Screw the L Shape Seal to the top rear corner of the door using two of the shortest flat headed screws.

3 Fit Seal B6A-7620565-R to the upper rear door panel and butt it firmly to the L shaped seal secured from step 1. Once properly positioned, mark the two holes within the seal then drill two 1/8" holes into the door panel to receive the installation screws. Apply weather stripping adhesive to the joint where the two seals meet. Apply adhesive to seal B6A-7620565-R then screw the seal the door with two round headed screws and washers.

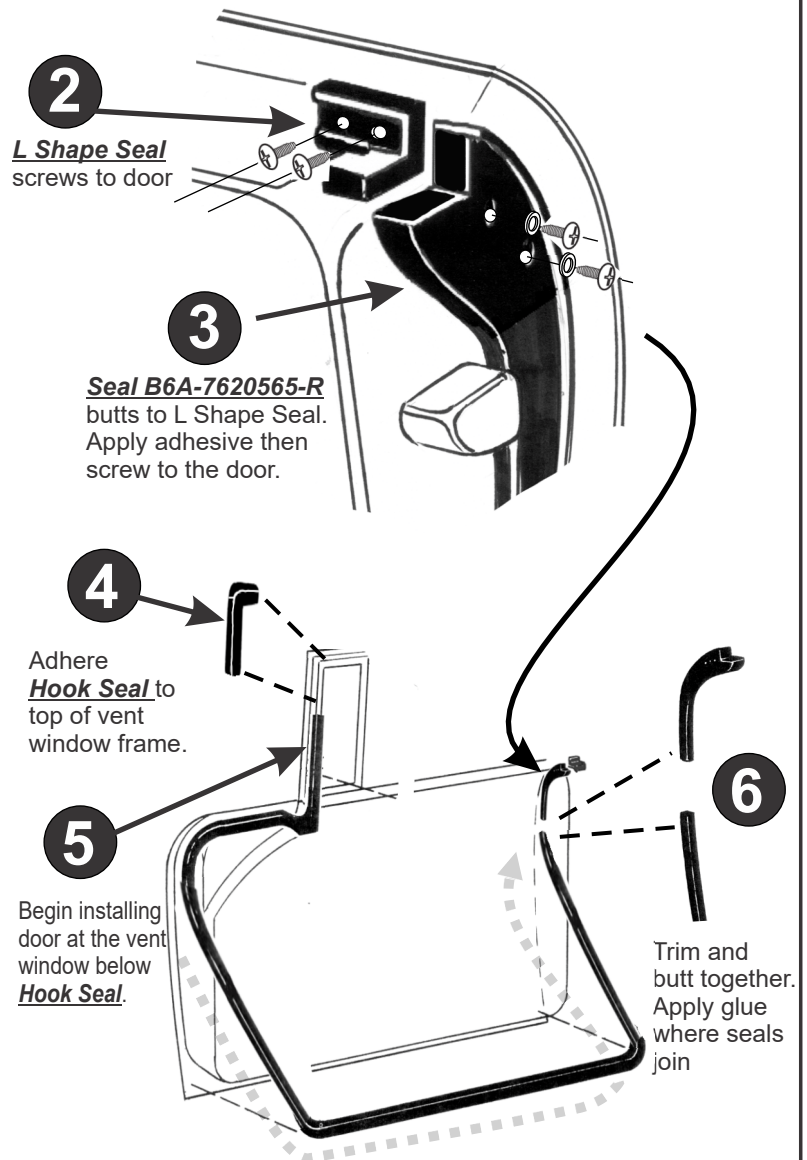
4 Apply adhesive to the Hook Seal and attach to the top front of the vent window frame.

5 Install the door seal by starting at the vent window just below the Hook Seal. Take note that the door seal has a formed section that conforms to dog leg of the door. Butt the end of the formed door seal to the bottom of the Hook Seal. Apply adhesive then precede glueing the seal down the vent window frame, along the dog leg section downward to the corner, along the bottom of the door then upward towards Seal B6A-7620565-R.

6 Where the end of the door seal meets Seal B6A-7620565-R, cut the door seal length so that it butts to the bottom of Seal B6A-7620565-R. Apply adhesive then adhere the seal to the door.

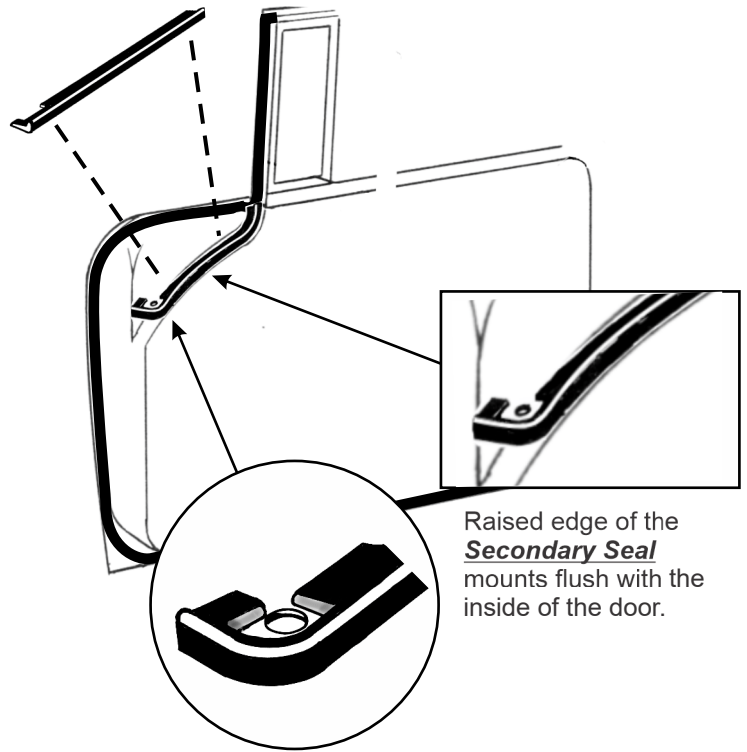
7. Repeat steps 1-6 to install door seals to driver's door.

(Instructions continue on the reverse side)



8. A Secondary Seal is applied to the top front (dog leg) portion of the door. Position the seal so that the notched end will encircle the drain hole located on the front of the door. The raised edge of the seal sets flush with the inside of the door. Apply adhesive and secure into position.

The Secondary Seal mounts to the top of the dog leg on the door.



Raised edge of the Secondary Seal mounts flush with the inside of the door.

Bend the Secondary Seal at the notch so that it encircles the drain hole in the door. Glue the seal into position.



21 Carpenter Ct NW. Concord, NC 28027-4627
 (704) 786-8139
 email: info@dennis-carpenter.com
www.Dennis-Carpenter.com

At Dennis Carpenter, We Make Quality Weatherstripping Products

door / trunk weatherstripping, windshield / rear window seals, grommets and more



Rubber injection presses are used at Carpenters to make vent window seals and other molded rubber parts.



Our rubber extrusion machine extends 92' and is capable of producing 25,000' of weatherstripping daily.



The rubber molding department is responsible for final assembly of door and trunk seals.

