

1961-66 Ford Pickup Head Liner Installation



HELPFUL TIPS

NOTE: Right before installation, we suggest filling a spray bottle with regular tap water and lightly spritz the back side of the head liner panels with water. This slight saturation will make the panels more pliable and easier to bend when installing. This will reduce the risk of breaking them when installing them into the cab corners.

NOTE: It is important to read these instructions before installation.

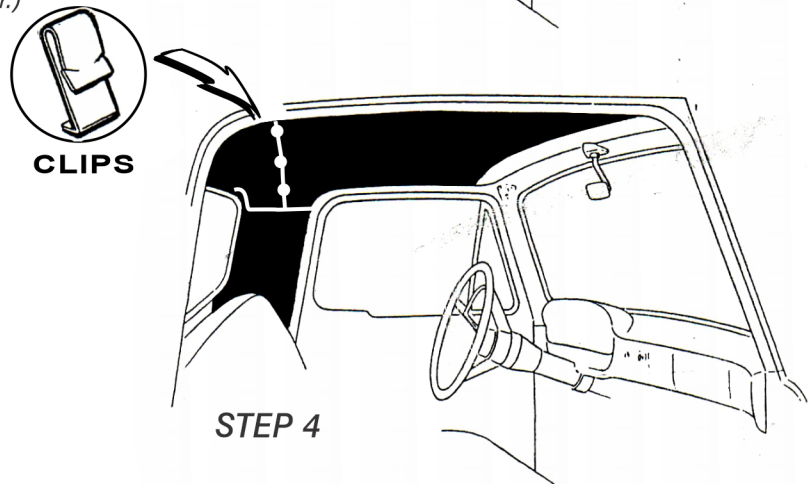
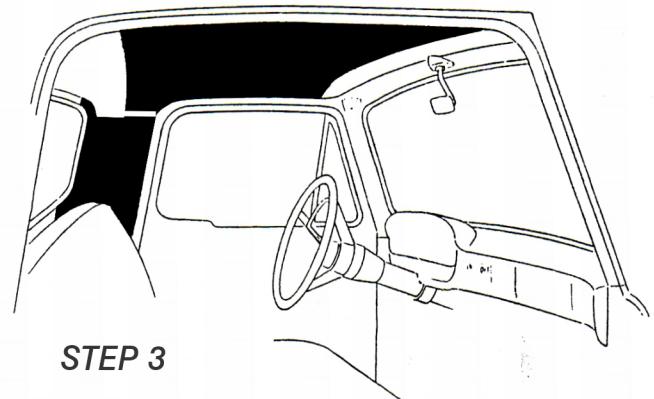
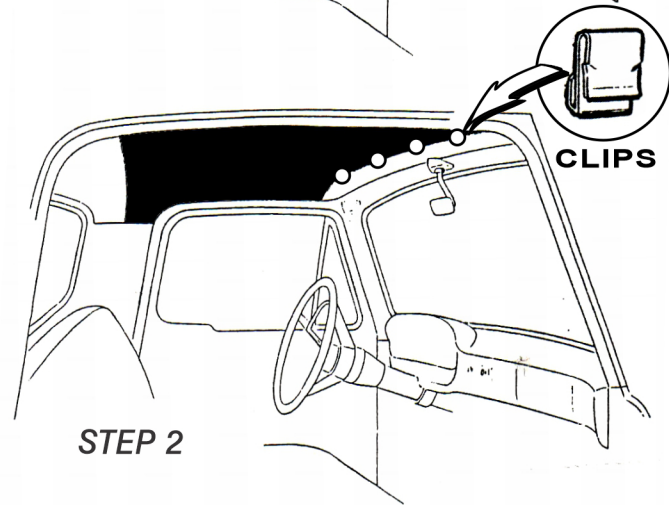
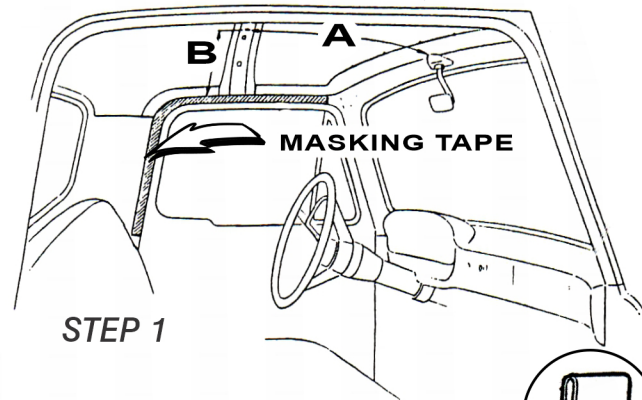
Tools Required: Two persons, Phillips screwdriver, a small hole punch, a sharpened pencil and 1" wide masking tape, spray bottle filled with water

STEP 1: Measure the distance "A" from top of mirror bracket to the small screw hole near the center of the roof reinforcement. Measure "B" from panel above door to the same screw hole, as shown in drawing. With the masking tape, start at the front of the panel above the door opening and continue down along the back as shown in the drawing. On the masking tape, mark the location of the screw holes that will hold the head liner panels in place. The purpose of the markings on the tape is that they will enable you to find the location of the screw holes which will be covered when the head liner panels are put into position.

STEP 2: Place the head liner (as shown in the drawing) with the front edge into the clips attached to the head liner panel above the windshield. With the hole punch, locate the screw holes above the door openings and screw the head liner into position. Using measurements "A" and "B", locate the center hole on the head liner and attach.

STEP 3: Each rear corner panel can be placed into position and attached. The surfaces of the head liner next to the back window will be tucked under the rear window rubber seal. (NOTE: Skip STEP 3 if you are installing a 2-piece head liner.)

STEP 4: The upper rear head liner panel can be positioned by placing the front edge into the clips at the back of the front head liner as shown in the drawing. The surfaces of the head liner next to the back window will be tucked under the rear window rubber seal.



www.Dennis-Carpenter.com

21 CARPENTER CRT. NW CONCORD, NC 28027-4627

704-786-8139